

महर्षी कर्वे स्त्री-शिक्षण संस्था, पुणे



“शीलं परं भूषणम्”  
स्थापना-१८९६



MAHARSHI KARVE STREE  
SHIKSHAN SAMSTHA'S  
**K.B. JOSHI INSTITUTE**  
OF INFORMATION  
TECHNOLOGY

2020

Reflection



## MAHARSHI KARVE STREE SHIKSHAN SAMSTHA'S

(Approved By Govt. of Maharashtra, NAAC Accredited)  
Approved by AICTE New Delhi, DTE (Dte Code – 6971),  
Affiliated to S.N.D.T. Women's University, Mumbai

**K.B. JOSHI INSTITUTE  
OF INFORMATION  
TECHNOLOGY**  
KARVE NAGAR, PUNE 411052

# About KBJIIT

K. B. Joshi Institute of Information Technology established in the year 2003. Joshi Foundation has given generous donation for the construction of the Institute in the name of Pioneering Businessman Late. K. B. Joshi who was founder member of several trade groups and trade association including Maharashtra Chamber of Commerce. Our meticulous thinking in framing up the curriculum, state of art infrastructure with innovative back-up, interactive exposure to the key happenings in the world of IT, makes our students understand the contemporary and future scenario. They are ready to meet pre-requisites of IT world. The Institute is basically interested in issues related to women in IT. It is committed to develop young women IT professionals for the avenues opened up due to tremendous growth of IT sector in every field of Business and day life.





“THE POWER OF MIND IS LIKE RAYS OF SUN DISSIPATED... WHEN THEY CONCENTRATE, THEY ILLUMINE.” –SWAMI VIVEKANANDA

‘EDUCATION’ IS TOOL OF TRANSFORMATION. BEING EDUCATIONAL INSTITUTE IT IS INDEED TO HONOUR TO USE THIS TOOL FOR TRANSFORMATION OF MANY LIVES OF GIRLS. BEING INFORMATION TECHNOLOGY INSTITUTE, THE STUDENTS ARE TAUGHT TO USE TECHNOLOGY TO DIGITALIZE. I AM HAPPY THAT WE COULD EXPAND THE COURSES THIS YEAR FROM BCA TO B.SC. IT, M.SC. CS. STUDENTS WILL GET THE OPPORTUNITY TO LEARN FROM UG TO PG.

THE KNOWLEDGE GAINED THROUGH COURSES ARE SUPPORTED BY DOCUMENTS OF VARIOUS MNCS LIKE WIPRO, COGNIZANT, INFOSYS, TCS, DELOITTE, L&T ETC. COLLEGE HAS ALSO SIGNED MANY MOUS FOR SKILL ENHANCEMENT OF STUDENTS. COLLEGE IS GROWING NOT ONLY QUANTITATIVELY BUT QUALITATIVELY. THE TEACHING AND NON-TEACHING JOIN HANDS IN THIS ENDEAVOUR. HOWEVER, THIS YEAR ENTRY OF COVID FROM MID-MARCH HAS PRACTICALLY CHANGED LIVES OF ALL OF US. HOWEVER, TEACHING-LEARNING PROCESS REMAIN UNINTERRUPTED DUE TO BOON OF TECHNOLOGY. WE HAVE COPEd UP WITH THIS NEW NORMAL WITHOUT COMPROMISING OUR DUTIES. I WISH THE NEXT ACADEMIC YEAR EVEN BETTER AND COVID FREE.

LMC CHAIRMAN: MRS. VIDYA KULKARNI

PRINCIPAL: DR. SWATI SAYANKAR

TEACHING STAFF:

ASST. PROF. RUPALI SARAF

ASST. PROF. KALYANI NAMJOSHI

ASST. PROF. APARNA KALE

ASST. PROF. ASAWARI SAWANT

ASST. PROF. MANALI SAKPAL

ASST. PROF. VIDYA DOLE

ASST. PROF. UMESH WAGHMARE

ASST. PROF. SHILPA YADAV

NON-TEACHING STAFF:

MR. GIRISH MOGHE

MR. SAGAR PANGARE

MRS. SHEETAL KHEDEKAR

MRS. SUJATA SHINDE

MR. JEEVAN KALE

MR. MADHIKAR RAUT

MR. JAYDEEP SHINDE





## **OBJECTIVE**

- PLACEMENT CELL SHARPENS SKILLS OF STUDENTS THROUGH TRAINING PROGRAMS, WORKSHOPS, GUEST LECTURES, SEMINARS AND MOCK INTERVIEWS.
- IT HELPS THE STUDENTS TO DEVELOP STRONG ANALYTICAL SKILLS, LOGICAL THINKING AND ENHANCE THEIR KNOWLEDGE TO ENTER THE IT WORLD.
- OUR STUDENTS ARE TRAINED TO AIM HIGH, LOOKING BEYOND THEIR CURRENT KNOWLEDGE AND CAPABILITIES TO EMERGE AS AN IT PROFESSIONAL.
- TO PREPARE THE STUDENTS TO DEMONSTRATE UNCOMPROMISING COMMITMENT TOWARDS QUALITY, VALUES AND EXCELLENCE.
- TO GROOM THE STUDENTS AND MAKE THEM AWARE OF THE CURRENT NEEDS AND GLOBAL DEVELOPMENTS.
- TO CREATE A TEAM OF CONFIDENT YOUNG IT PROFESSIONALS WHO CAN SEE AND DO THINGS DIFFERENTLY.
- TO MAINTAIN GOOD LIAISON WITH THE INDUSTRY AND ATTRACT PROSPECTIVE EMPLOYERS FOR CAMPUS RECRUITMENT PROGRAM.

## **WORKFLOW OF PLACEMENT DEPARTMENT**

- COMMUNICATION WITH COMPANY OFFICIALS REGARDING REQUIREMENTS.
- COMPANY CONCERN PERSON RESPONDS WITH REQUIREMENTS & ELIGIBILITY CRITERIA.
- COLLEGE TPO COMMUNICATES DRIVE DETAILS ALONG WITH ELIGIBILITY CRITERIA TO TPOS OF VARIOUS COLLEGES.
- RECEIVE DATA FROM VARIOUS COLLEGES.
- FORWARD THIS DATA TO THE COMPANY IF REQUIRED.
- INFORM STUDENTS REGARDING DOCUMENTS REQUIRED & SCHEDULE.

COMPANIES INVOLVED:

- WIPRO
- INFOSYS
- COGNIZANT
- TCS
- DELOITTE

IN ACADEMIC YEAR 2020-21 ALL THE DRIVES WERE CONDUCTED IN THE ONLINE MODE

PLACEMENT SELECTED FROM K B JOSHI INSTITUTE OF IT !!

PLACEMENT SELECTS FOR YEAR 2020-21

SR.NO. STUDENT NAME COMPANY SELECTED

- 1 ISHITA PATIL DELOITTE, LTI ,COGNIZANT
- 2 KALYANI BHAVSAR COGNIZANT
- 3 MRUNAL SURDESHMUKH COGNIZANT
- 4 ADITI JARE COGNIZANT
- 5 SHWETA NAYKODI COGNIZANT
- 6 POONAM NISHAD INFOSYS
- 7 HEMANGI CHOUDHARI INFOSYS
- 8 ANUSHKA SABLE INFOSYS ,TCS ,WIPRO, COGNIZANT
- 9 PRATIKSHA URAWANE INFOSYS
- 10 PRAGATI PRIYA INFOSYS
- 11 PRATIDNYA MANJAREKAR INFOSYS
- 12 ANOSHA NAIK INFOSYS
- 13 MAITRYEE KALANTRE WIPRO
- 14 ARTI MAHSKE COGNIZANT
- 15 POOJA JOGDAND COGNIZANT
- 16 SAKSHI DESAI WIPRO



CULTURAL DEPARTMENT IS THE ONE WHO IS RESPONSIBLE FOR ALL INTRA AND INTER COLLEGIATE CULTURAL EVENTS IN THE COLLEGE.

TO PLAN AND SCHEDULE CULTURAL EVENTS FOR THE ACADEMIC YEAR. CULTURAL DEPARTMENT PLAYS ESSENTIAL ROLE IN BALANCING BETWEEN CURRICULAR, CO-CURRICULAR AND EXTRA- CURRICULAR ACTIVITIES.

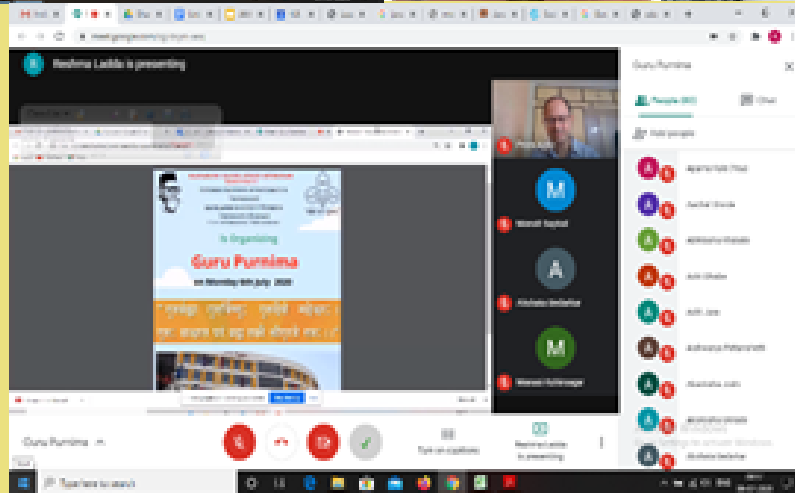
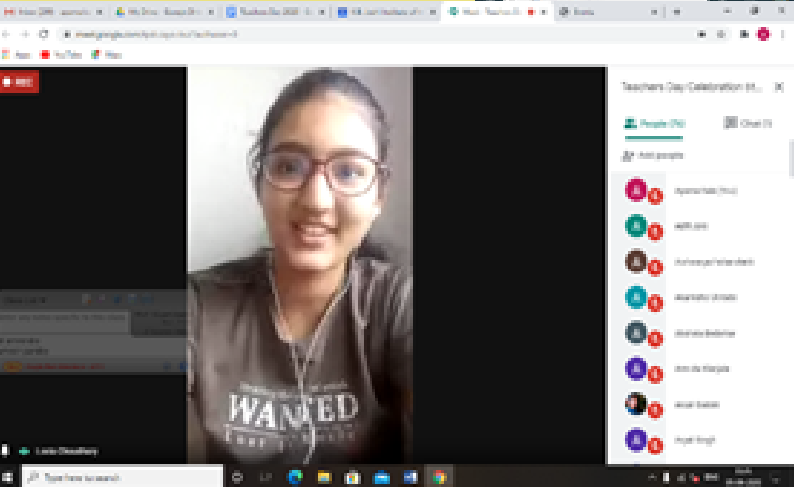
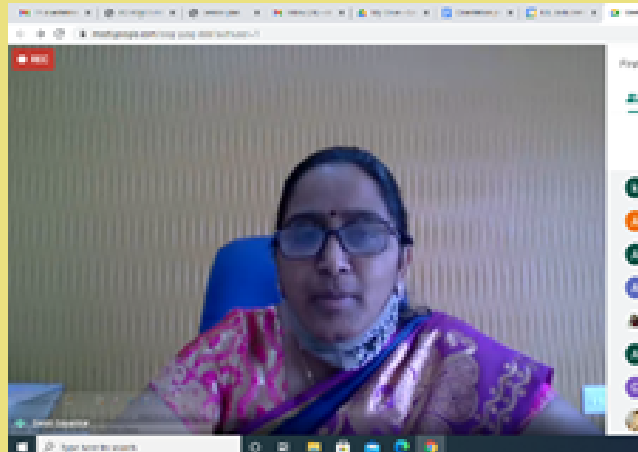
WE ARE WELL AWARE THAT EVERY INDIVIDUAL HAS SOME SPECIAL SKILL, ABILITY OR CHARACTERISTIC WHICH CAN STAND HER OUT OF THE CROWD.

THESE SKILLS TRAVERSE BEYOND STUDIES, EXAMS AND MARKS. AT K.B. JOSHI INSTITUTE OF INFORMATION TECHNOLOGY, CULTURAL DEPARTMENT PLANNED VARIOUS ACTIVITIES TO TAKE OUT OTHER BRIGHTER SIDE OF OUR STUDENTS.

THESE SKILLS TRAVERSE BEYOND STUDIES, EXAMS AND MARKS. AT K.B. JOSHI INSTITUTE OF INFORMATION TECHNOLOGY, CULTURAL DEPARTMENT PLANNED VARIOUS ACTIVITIES TO TAKE OUT OTHER BRIGHTER SIDE OF OUR STUDENTS.

FOLLOWING EVENTS WERE ORGANISED BY K.B. JOSHI INSTITUTE OF INFORMATION TECHNOLOGY IN THE YEAR 2020-21:

- ORIENTATION PROGRAM
- GURUPOURNIMA
- MEHENDI COMPETITION
- ESSAY COMPETITION
- TEACHER'S DAY
- AAVISHKAR





## **SPORTS COMMITTEE**

### **VISION STATEMENT OF SPORTS COMMITTEE**

**THE VISION OF THE SPORTS COMMITTEE IS TO ORGANIZE TRAINING, COACHING AND EDUCATION IN SPORTS FOR EVERYBODY SO THAT THEY CAN LEARN TO KEEP THEMSELVES PHYSICALLY FIT.**

### **MISSION STATEMENT OF SPORTS COMMITTEE**

**THE COMMITTEE AIMS AT ENHANCING THE INTEREST OF THE PARTICIPANTS IN THE FIELD OF SPORTS. TO ACHIEVE THE ABOVE WE PLAN TO ORGANIZE VARIOUS COMPETITIONS IN THE FOLLOWING SPORTS: FOOTBALL, CRICKET, BASKETBALL, VOLLEYBALL, TABLE TENNIS, CHESS, BADMINTON.**

### **OBJECTIVES OF SPORTS COMMITTEE**

**THE SPORTS COMMITTEE IS TO PROMOTE EVERY INDIVIDUALS HEALTH, PHYSICAL WELL-BEING AS WELL AS THE ACQUISITION OF PHYSICAL SKILLS AMONG THE STUDENTS. THE COMMITTEE ASPIRES TO INCULCATE QUALITIES SUCH AS SPORTSMANSHIP, TEAM SPIRIT AND BONDING. IT IS DESIGNED TO SERVE THE INTERESTS OF THE STUDENT COMMUNITY IN COMPETITIVE SPORTS AND OTHER RECREATIONAL ACTIVITIES I.E. BOTH INDOOR AND OUTDOOR.**

### **FUNCTIONS:**

- A. TO CREATE ZEAL AMONGST STUDENTS AND FACULTY MEMBERS TOWARDS SPORTS.**
- B. TO ORGANIZE TRAINING, COACHING AND EDUCATION IN SPORTS FOR EVERYBODY SO THAT THEY CAN LEARN TO KEEP THEMSELVES PHYSICALLY FIT.**
- C. TO ENHANCE THE INTEREST OF PARTICIPANTS IN THE FIELD OF SPORTS.**
- D. TO ACHIEVE THE GOALS WE PLAN TO ORGANIZE VARIOUS COMPETITIONS IN THE FOLLOWING SPORTS: FOOTBALL, CRICKET, BASKETBALL, VOLLEYBALL, TABLE TENNIS, CHESS, CAROM AND BADMINTON ETC.**
- E. TO PROMOTE EVERY INDIVIDUALS' HEALTH, PHYSICAL WELL-BEING AS WELL AS THE ACQUISITION OF PHYSICAL SKILL AMONG THE STUDENTS.**
- F. THE COMMITTEE ASPIRES TO INCULCATE QUALITIES SUCH AS SPORTSMANSHIP, TEAM SPIRIT AND BONDING.**
- G. IT IS DESIGNED TO SERVE THE INTERESTS OF THE STUDENT'S COMMUNITY IN COMPETITIVE SPORTS AND OTHER RECREATIONAL ACTIVITIES I.E. BOTH INDOOR AND OUTDOOR.**

### **RESPONSIBILITIES:**

- A. THE COMMITTEE SHALL PROMOTE SPORTS ACTIVITIES BY MOTIVATING STUDENTS AND MEMBERS OF FACULTY.**
- B. PROMOTING TEAM SPIRIT BY MAKING HEALTHY COMPETITION.**
- C. TO ORGANIZE REGULAR SPORTS EVENTS IN ORDER TO TRAIN STUDENTS FOR STATE AND NATIONAL LEVEL COMPETITIONS.**
- D. TO ARRANGE FOR BETTER COACHING FACILITIES.**
- E. PROPER MAINTENANCE OF SPORTS ACCESSORIES.**
- F. TO PROVIDE NECESSARY INFRASTRUCTURE FOR THE SPORTS.**



**A SPORTS EVENT IS CELEBRATED IN OUR SAMSTHA EVERY YEAR CALLED "DAMINI". IT FALLS IN MONTH OF JANUARY EACH YEAR ALL THE CLASSES FROM OUR COLLEGE WERE EXTENDED INVITATION TO PARTICIPATE IN VARIOUS INDOOR AND OUTDOOR GAMES. THE PLAY GROUNDS WERE SWEEPED AND WATER WAS SPRINKLED. IT WAS A VERY BRIGHT AND CHEERFUL DAY. THE DAY STARTED WITH THE UNFURLING OF THE EVENT FLAG AND THE MARCH PAST OF THE ATHLETES BELONGING TO ALL THE COLLEGES UNDER MKSSS.**

**IT PROVIDED A LOT OF INTEREST AND EXCITEMENT. IT WAS FOLLOWED BY TWO OTHER WITH SOME TEACHERS. IT WAS A GREAT FUN SEEING. THERE WAS A LOT OF NOISE AND THE STUDENTS WERE RAISING THE SPIRITS OF THEIR FAVORITE PARTY. IT WAS A DAY FULL OF EXCITEMENT AND ENTHUSIASM. SEVERAL OLD RECORDS WERE BROKEN AND SOME NEW RECORDS WERE CREATED.**



## NATIONAL SERVICE SCHEME

THE NATIONAL SERVICE SCHEME (NSS) IS AN INDIAN GOVERNMENT-SPONSORED PUBLIC SERVICE PROGRAM CONDUCTED BY THE DEPARTMENT OF YOUTH AFFAIRS AND SPORTS OF THE GOVERNMENT OF INDIA. POPULARLY KNOWN AS NSS, THE SCHEME WAS LAUNCHED IN GANDHIJI'S CENTENARY YEAR, 1969. AIMED AT DEVELOPING STUDENT'S PERSONALITY THROUGH COMMUNITY SERVICE, NSS IS A VOLUNTARY ASSOCIATION OF YOUNG PEOPLE IN COLLEGES, UNIVERSITIES AND AT +2 LEVEL WORKING FOR A CAMPUS-COMMUNITY LINKAGE.

### HISTORY

AFTER INDEPENDENCE THE UNIVERSITY GRANTS COMMISSION, HEADED BY S.RADHAKRISHNAN, RECOMMENDED THE INTRODUCTION OF VOLUNTARY NATIONAL SERVICE IN ACADEMIC INSTITUTIONS. THIS IDEA WAS AGAIN CONSIDERED BY THE CENTRAL ADVISORY BOARD OF EDUCATION (CABE) AT ITS MEETING IN JANUARY, 1950; AFTER EXAMINING THE IDEA AND THE EXPERIENCES OF OTHER COUNTRIES IN THIS FIELD, THE BOARD RECOMMENDED THAT STUDENTS AND TEACHERS SHOULD DEVOTE TIME TO VOLUNTARY MANUAL WORK. IN THE DRAFT FIRST FIVE-YEAR PLAN ADOPTED BY THE GOVERNMENT IN 1952, THE NEED FOR SOCIAL AND LABOUR SERVICE BY INDIAN STUDENTS FOR ONE YEAR WAS STRESSED. IN 1958 JAWAHARLAL NEHRU, IN A LETTER TO THE CHIEF MINISTERS, CONSIDERED THE IDEA OF SOCIAL SERVICE AS A PREREQUISITE FOR GRADUATION. HE DIRECTED THE MINISTRY OF EDUCATION TO FORMULATE A SUITABLE SCHEME FOR THE INTRODUCTION OF NATIONAL SERVICE INTO ACADEMIC INSTITUTIONS.

### SYMBOL OF NSS

THE SYMBOL FOR THE NSS HAS BEEN BASED ON THE GIANT RATH WHEEL OF THE WORLD FAMOUS KONARK SUN TEMPLE (THE BLACK PAGODA) SITUATED IN ODISHA, INDIA. THE WHEEL PORTRAYS THE CYCLE OF CREATION, PRESERVATION AND RELEASE. IT SIGNIFIES THE MOVEMENT IN LIFE ACROSS TIME AND SPACE, THE SYMBOL THUS STANDS FOR CONTINUITY AS WELL AS CHANGE AND IMPLIES THE CONTINUOUS STRIVING OF NSS FOR SOCIAL CHANGE. THE EIGHT BARS IN THE WHEEL REPRESENTS 24 HOURS OF A DAY. THE RED COLOUR INDICATES THAT THE VOLUNTEER IS FULL OF YOUNG BLOOD THAT IS LIVELY, ACTIVE, ENERGETIC AND FULL OF HIGH SPIRIT. THE NAVY BLUE COLOUR INDICATES THE COSMOS OF WHICH THE NSS IS TINY PART, READY TO CONTRIBUTE ITS SHARE FOR THE WELFARE OF THE MANKIND. IT STANDS FOR CONTINUITY AS WELL AS CHANGE AND IMPLIES THE CONTINUOUS STRIVING OF NSS FOR SOCIAL TRANSFORMATION AND UPLIFT.

## AIM

1. THE PROGRAMME AIMS TO INCULCATE SOCIAL WELFARE IN STUDENTS, AND TO PROVIDE SERVICE TO SOCIETY WITHOUT BIAS. NSS VOLUNTEERS WORK TO ENSURE THAT EVERYONE WHO IS NEEDY GETS HELP TO ENHANCE THEIR STANDARD OF LIVING AND LEAD A LIFE OF DIGNITY. IN DOING SO, VOLUNTEERS LEARN FROM PEOPLE IN VILLAGES HOW TO LEAD A GOOD LIFE DESPITE A SCARCITY OF RESOURCES. IT ALSO PROVIDES HELP IN NATURAL AND MAN-MADE DISASTERS BY PROVIDING FOOD, CLOTHING AND FIRST AID TO THE DISASTER VICTIMS.

## ORGANIZATION

AT NATIONAL LEVEL, MINISTRY OF YOUTH AFFAIRS AND SPORTS OF INDIA IS THE NODAL AUTHORITY, WHICH WORKS WITH STATE-LEVEL NSS CELLS. STATE-LEVEL NSS CELLS ARE RESPONSIBILITY OF THE RESPECTIVE STATE GOVERNMENTS. WITHIN STATES, EACH UNIVERSITY HAS UNIVERSITY LEVEL NSS CELL UNDER WHICH INSTITUTIONS (SCHOOLS AND COLLEGES) BASED NSS UNITS OPERATE. MOST GOVERNMENT AND GOVERNMENT-AIDED INSTITUTIONS HAVE VOLUNTEER NSS UNITS. INSTITUTIONS ARE ENCOURAGED TO HAVE NSS VOLUNTEERS. A UNIT TYPICALLY COMPRISES 20-40 STUDENTS. THEY ARE MANAGED INTERNALLY BY A RESPONSIBLE PARTY FROM THE SCHOOL OR COLLEGE, WHO REPORTS TO THE REGIONAL NSS COORDINATOR. MOST INSTITUTIONS DO NOT HAVE A SEPARATE UNIFORM FOR NSS.

THE MAIN OBJECTIVES OF NATIONAL SERVICE SCHEME (NSS) ARE:

- I. UNDERSTANDS THE COMMUNITY IN WHICH THEY WORK
- II. UNDERSTAND THEMSELVES IN RELATION TO THEIR COMMUNITY
- III. IDENTIFY THE NEEDS AND PROBLEMS OF THE COMMUNITY AND INVOLVE THEM IN PROBLEM-SOLVING
- IV. DEVELOP AMONG THEMSELVES A SENSE OF SOCIAL AND CIVIC RESPONSIBILITY
- V. UTILIZES THEIR KNOWLEDGE IN FINDING PRACTICAL SOLUTIONS TO INDIVIDUAL AND COMMUNITY PROBLEMS
- VI. DEVELOP COMPETENCE REQUIRED FOR GROUP-LIVING AND SHARING OF RESPONSIBILITIES
- VII. GAIN SKILLS IN MOBILIZING COMMUNITY PARTICIPATION
- VIII. ACQUIRE LEADERSHIP QUALITIES AND DEMOCRATIC ATTITUDES
- IX. DEVELOP CAPACITY TO MEET EMERGENCIES AND NATURAL DISASTERS AND
- X. PRACTICE NATIONAL INTEGRATION AND SOCIAL HARMONY

## MOTTO:

THE MOTTO OF NSS "NOT ME BUT YOU", REFLECTS THE ESSENCE OF DEMOCRATIC LIVING AND UPHOLDS THE NEED FOR SELF-LESS SERVICE. NSS HELPS THE STUDENTS DEVELOP APPRECIATION TO OTHER PERSON'S POINT OF VIEW AND ALSO SHOW CONSIDERATION TO

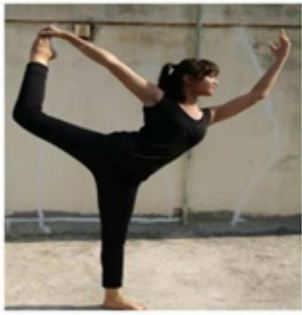
OTHER LIVING BEINGS. THE PHILOSOPHY OF THE NSS IS WELL DOCTRINE IN THIS MOTTO, WHICH UNDERLINES/ON THE BELIEF THAT THE WELFARE .OF AN INDIVIDUAL IS ULTIMATELY DEPENDENT ON THE WELFARE OF THE SOCIETY ON THE WHOLE AND THEREFORE, THE NSS VOLUNTEERS SHALL STRIVE FOR THE WELL-BEING OF THE SOCIETY.

#### NSS ACTIVITIES

OUR INSTITUTIONS VOLUNTEERS ARE INVOLVED IN REGULAR BLOOD DONATION AND CLEANLINESS DRIVES.









## EXAMINATION DEPARTMENT

### LIST OF TOPPER STUDENTS:

	<b>STUDENT NAME</b>	<b>GPA GRADE</b>	
RANK 1-	PATIL ISHITA	9.82	9.82
RANK 2-	KUDHALE NEHA	9.79	9.79
RANK 3-	JADHAV SWAPNALI	9.77	9.77

A photograph of a library interior. In the foreground, a stack of several books is placed on a wooden table. The books have various colored spines, including grey, red, and blue. The background shows a wooden bookshelf filled with many books, slightly out of focus. The word "LIBRARY" is written in bold, black, uppercase letters on the side of the stack of books.

## **LIBRARY**

**LIBRARY IS A PLACE IN WHICH EDUCATIONAL MATERIALS SUCH AS BOOKS, PERIODICALS, PROJECTS, QUESTION BANKS ARE KEPT FOR LEARNING, READING AND REFERENCES WHICH OFFERS THE STUDENTS A WHOLE READING SCOPE OF THEIR CHOICE, THUS HELPING THEM ACQUIRE THE KNOWLEDGE ON A WIDE RANGE OF TOPICS. THE LITERARY AND ARTISTIC MATERIAL SUCH AS MAGAZINES, NEWSPAPERS, ENCYCLOPEDIA, DICTIONARIES ETC. ARE AVAILABLE IN THE LIBRARY.**